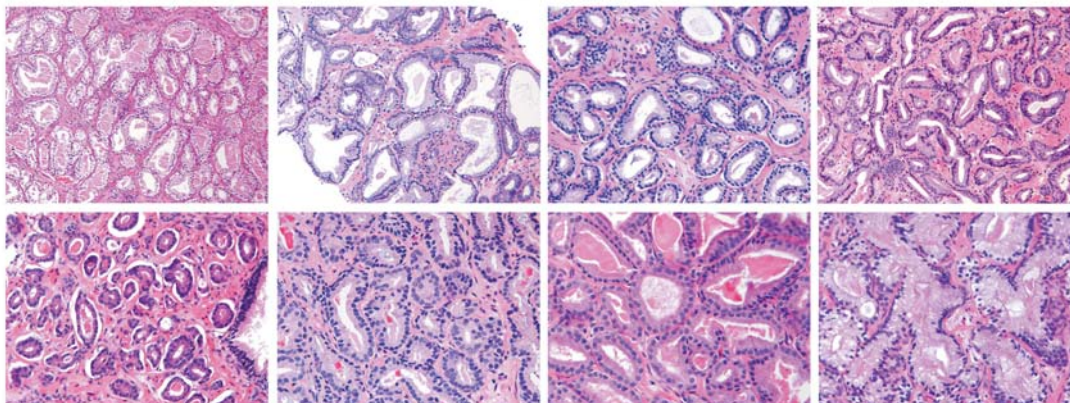
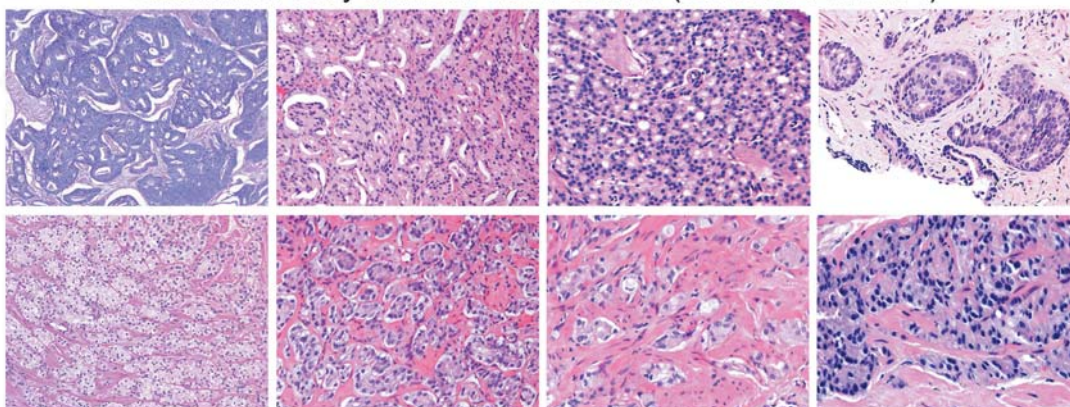


A NEW CONTEMPORARY PROSTATE CANCER GRADING SYSTEM

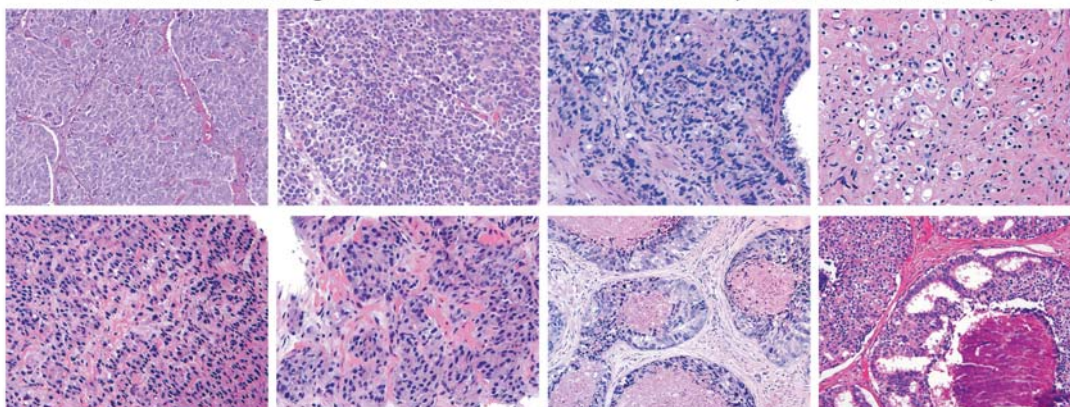
Discrete Well-formed Glands (Gleason Patterns 1-3)



Cribriform/Poorly-formed/Fused Glands (Gleason Pattern 4)



Sheets/Cords/Single Cells/Solid Nests/Necrosis (Gleason Pattern 5)



Copyright 2013 The Johns Hopkins University. All rights reserved

Jonathan Epstein, M.D.

From Left to Right:

1st Row: Closely packed uniform sized and shaped large glands; Large variably sized and shaped glands, some with infolding; Uniform medium sized glands; Variably sized glands

2nd Row: Occasional tangentially sectioned glands amongst well-formed small glands; Occasional tangentially sectioned glands amongst well-formed glands with open lumina; Back-to-back discrete glands; Branching glands

3rd Row: Large irregular cribriform glands with well-formed lumina; Irregular cribriform glands with slit-like lumina, glomeruloid structures, and fused glands; Irregular cribriform glands with small round lumina; Small round cribriform glands

4th Row: Poorly-formed glands with peripherally arranged nuclei; Small poorly-formed glands; Small poorly-formed glands; Fused poorly-formed glands

5th Row: Sheets of cancer; Sheets of cancer with rosette formation; Small nests and cords of tumor with scattered clear vacuoles; Individual cells

6th Row: Nests and cords of cells with only vague attempt at lumina formation; Solid nests of cancer; Solid nests with comedonecrosis; Cribriform glands with central comedonecrosis